



VILLAGES

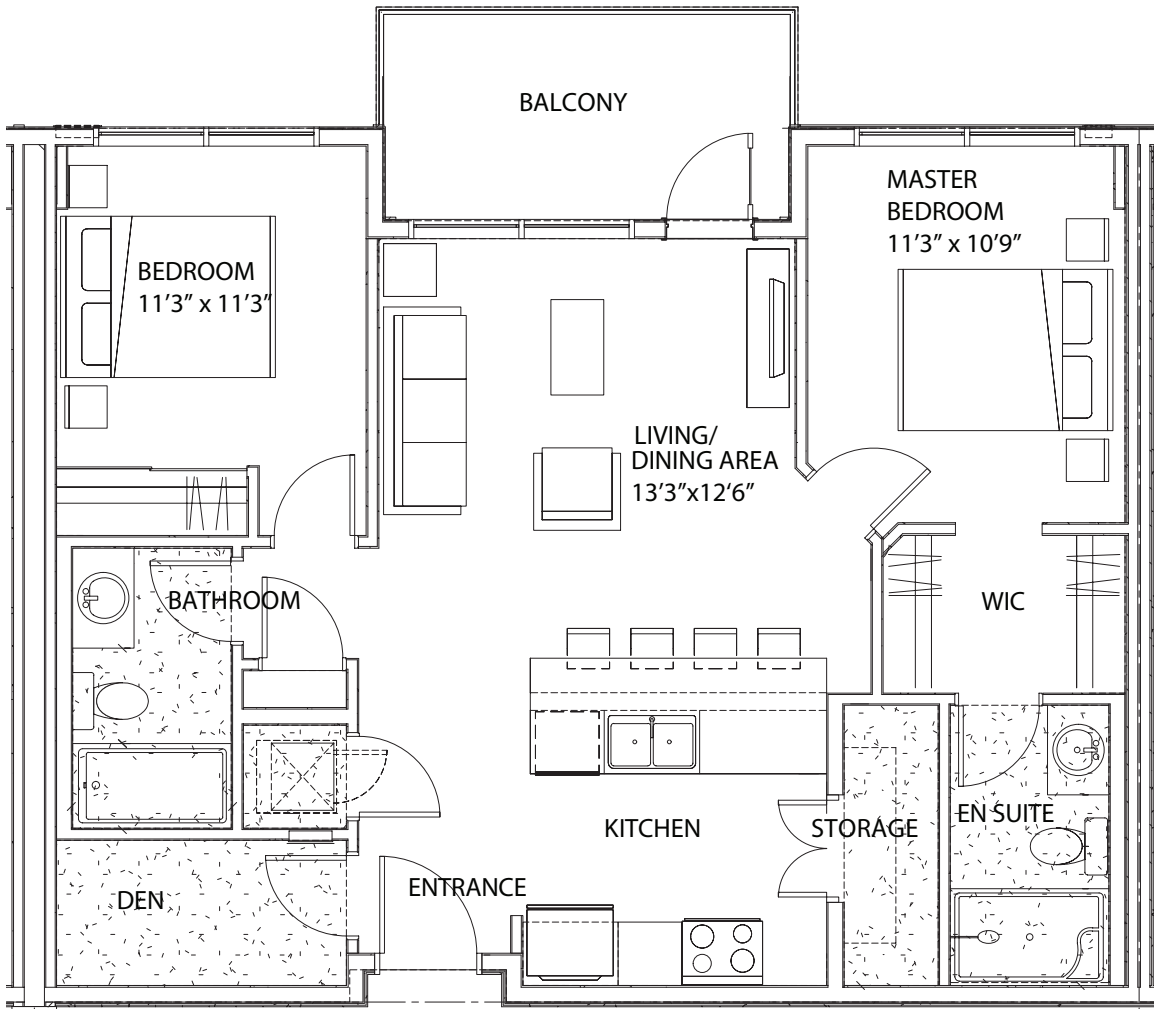
AT NOLAN HILL

A | 2 BR + Den, 2 Bath | 890 SF

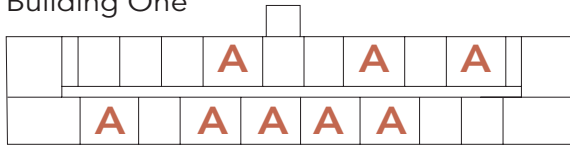
Bldg One: 101, 109, 110, 111, 112, 117, 119, 201, 207, 209, 211, 212, 217, 219, 301, 307, 309, 311, 312, 317, 319, 401, 407, 409, 410, 411, 412, 417, 419

Bldg Two(all 4 floors): 101, 108, 109, 110, 111, 112, 116, 118

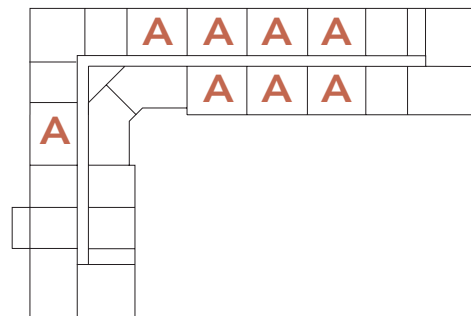
Bldg Three: 107, 108, 109, 114, 115, 116, 117, 121



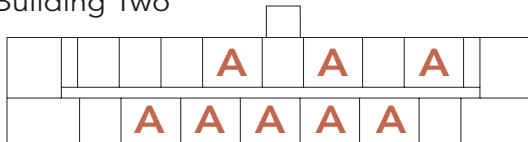
Building One



Building Three



Building Two



100, 200, 300 Nolan Hill Rise SW
Calgary, AB