



VILLAGES

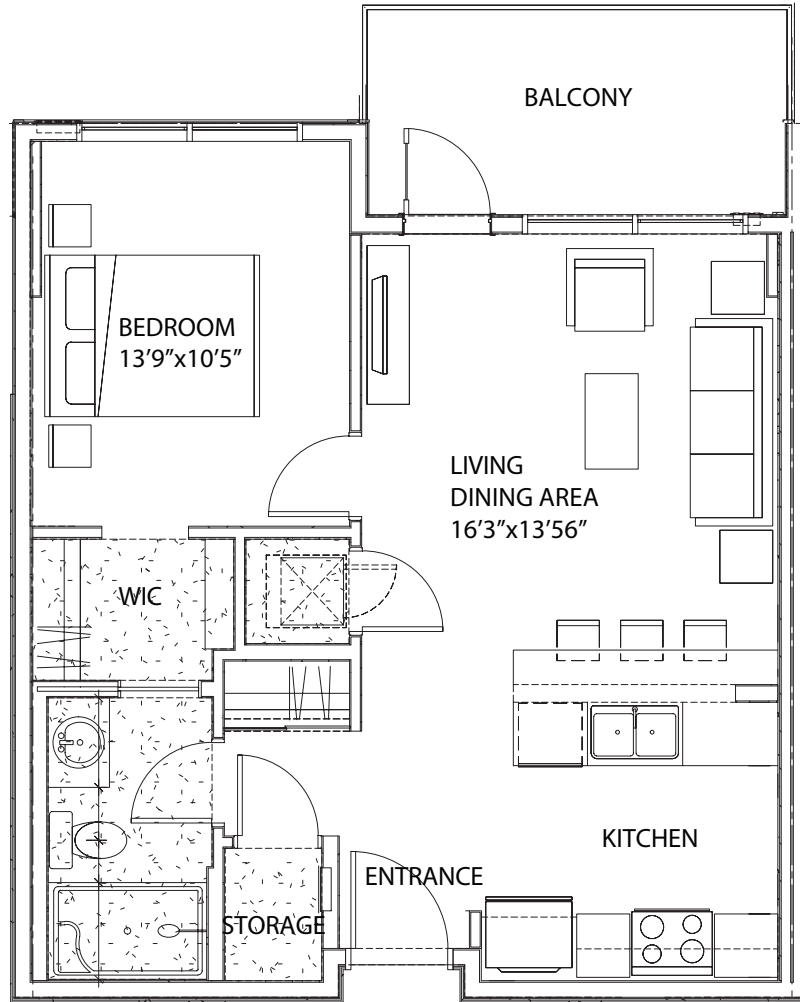
AT NOLAN HILL

C | 1 BR, 1 Bath | 611 SF

Bldg One (all 4 floors): 102, 103, 104, 108, 113, 114, 118, 120

Bldg Two (all 4 floors): 102, 103, 104, 107, 113, 117

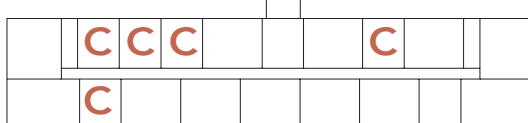
Bldg Three (all 4 floors): 103, 104, 110, 113, 118, 120



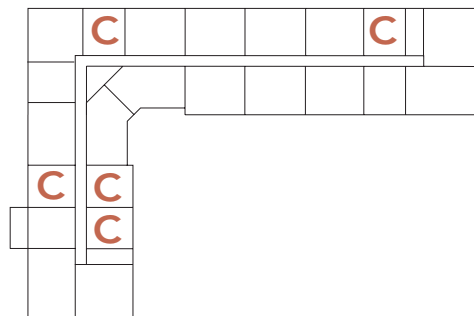
Building One



Building Two



Building Three



100, 200, 300 Nolan Hill Rise SW
Calgary, AB