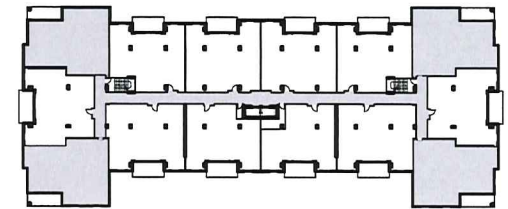




MASTER BEDROOM:	193 sf
BEDROOM 2:	165 sf
DEN:	93 sf
LIVING ROOM:	269 sf
DINING ROOM:	135 sf
KITCHEN:	125 sf
DECK (BALCONY):	142 sf



KEY PLAN: NTS

UNIT A - 2br + den
 AREA: 1,514 sf
 LEVEL 2 - 5

RESIDENTIAL DEVELOPMENT

246 INNOVATION DRIVE - BEDFORD WEST WB10 B

UNIT A

UNIT LAYOUTS

1/8" = 1'-0"

Feb 25, 2016



Kassner Goodspeed Architects Ltd.

5663 Cornwallis Street, Suite 200 Halifax, NS B3K 1B6
 tel 902 422 1557 | fax 902 422 8685 | www.kgarch.ns.ca