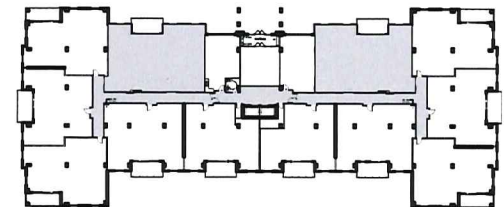




MASTER BEDROOM: 213 sf  
 BEDROOM 2: 153 sf  
 BEDROOM 3: 193  
 DEN: 127 sf  
 LIVING ROOM: 228 sf  
 DINING AND KITCHEN: 164 / 124 sf  
 DECK (BALCONY): 145 sf



KEY PLAN: NTS

UNIT B2 - 3br + den  
 AREA: 2,000 sf  
 LEVEL 2

## RESIDENTIAL DEVELOPMENT

## UNIT B2

246 INNOVATION DRIVE- BEDFORD WEST WB10 B

UNIT LAYOUTS

1/8" = 1'-0"



**Kassner Goodspeed Architects Ltd.**

5663 Cornwallis Street, Suite 200 Halifax, NS B3K 1B6  
 tel 902 422 1557 | fax 902 422 8685 | [www.kgarch.ns.ca](http://www.kgarch.ns.ca)

Feb 26, 2016