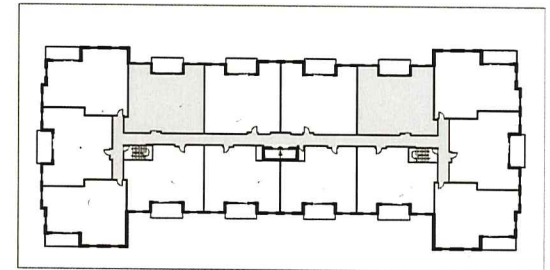




MASTER BEDROOM: 212 sf
 BEDROOM 2: 154 sf
 DEN: 125 sf
 LIVING ROOM: 252 sf
 DINING AND KITCHEN: 231 sf
 DECK (BALCONY): 155 sf



KEY PLAN: NTS

UNIT B
AREA: 1,562 sf LEVEL 3 - 5

RESIDENTIAL DEVELOPMENT
INNOVATION DRIVE- BEDFORD WEST WB10 A & B

UNIT B
UNIT LAYOUTS
1/8" = 1'-0"

Feb 21, 2014