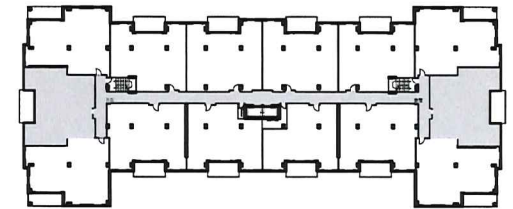




MASTER BEDROOM: 200 sf
 BEDROOM 2: 232 sf
 DEN: 75 sf
 LIVING ROOM: 234 sf
 DINING AND KITCHEN: 218 sf
 DECK (BALCONY): 158 sf



KEY PLAN: NTS

UNIT C - 2 br + den
 AREA: 1,484 sf
 LEVEL 2 - 5

RESIDENTIAL DEVELOPMENT

246 INNOVATION DRIVE- BEDFORD WEST WB10 B

UNIT C

UNIT LAYOUTS

1/8" = 1'-0"

Feb 26, 2016



Kassner Goodspeed Architects Ltd.

5663 Cornwallis Street, Suite 200 Halifax, NS B3K 1B6

tel 902 422 1557 | fax 902 422 8685 | www.kgarch.ns.ca