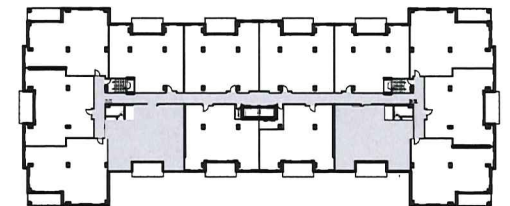




MASTER BEDROOM: 192 sf
 BEDROOM 2: 194 sf
 DEN: 106 sf
 LIVING ROOM: 238 sf
 DINING AND KITCHEN: 260 sf
 DECK (BALCONY): 145 sf



KEY PLAN: NTS

UNIT D - 2br + den
AREA: 1,396 sf
LEVEL 3-5

RESIDENTIAL DEVELOPMENT

246 INNOVATION DRIVE - BEDFORD WEST WB10 B

UNIT D

UNIT LAYOUTS

1/8" = 1'-0"



Kassner Goodspeed Architects Ltd.

5663 Cornwallis Street, Suite 200 Halifax, NS B3K 1B6
 tel 902 422 1557 | fax 902 422 8685 | www.kgarch.ns.ca

Feb 29, 2016