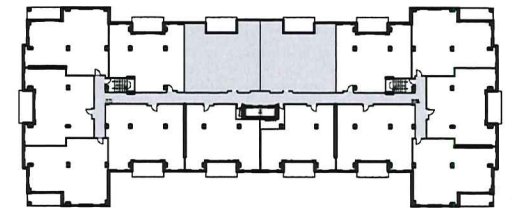




MASTER BEDROOM: 228 sf  
 BEDROOM 2: 154 sf  
 DEN: 125 sf  
 LIVING ROOM: 249 sf  
 DINING AND KITCHEN: 233 sf  
 DECK (BALCONY): 155 sf



KEY PLAN: NTS

UNIT G - 2br + den  
 AREA: 1,550 sf  
 LEVEL 3 - 5

## RESIDENTIAL DEVELOPMENT

246 INNOVATION DRIVE - BEDFORD WEST WB10 B

## UNIT G

UNIT LAYOUTS

1/8" = 1'-0"

Mar 01, 2016



**Kassner Goodspeed Architects Ltd.**

5663 Cornwallis Street, Suite 200 Halifax, NS B3K 1B6  
 tel 902 422 1557 | fax 902 422 8685 | [www.kgarch.ns.ca](http://www.kgarch.ns.ca)