



VILLAGES

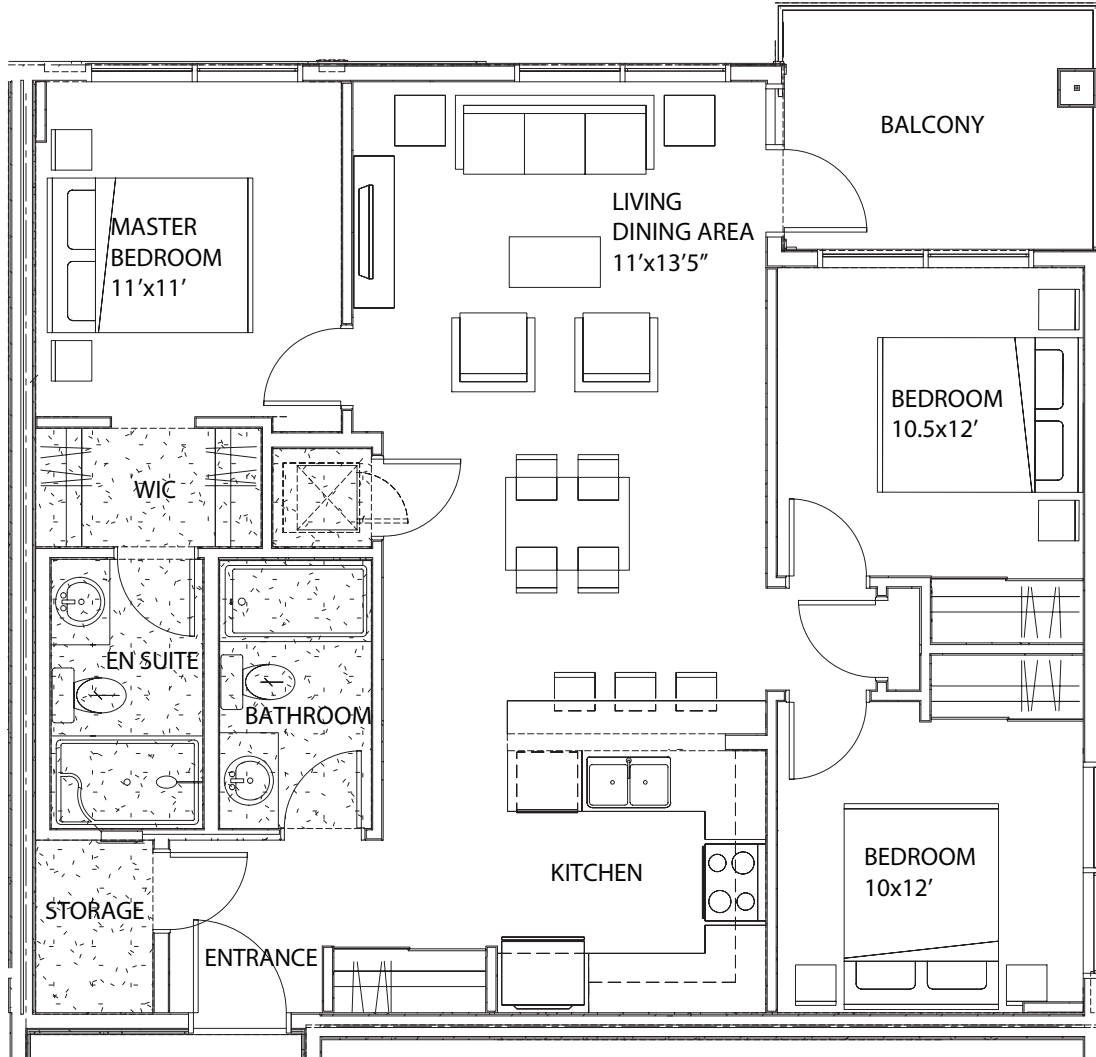
AT NOLAN HILL

D | 3 BR, 2 Bath | 1,025 SF

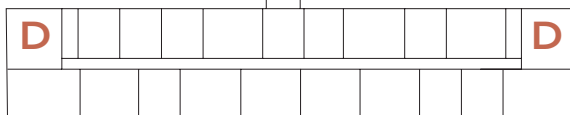
Bldg One: 116, 205, 216, 305, 316, 405, 416

Bldg Two: 115, 205, 215, 305, 315, 405, 415

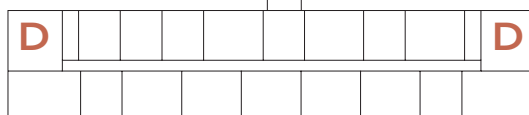
Bldg Three: 102, 202, 212, 302, 312, 402, 412



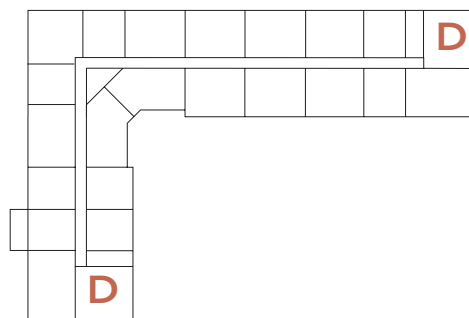
Building One



Building Two



Building Three



100, 200, 300 Nolan Hill Rise SW
Calgary, AB